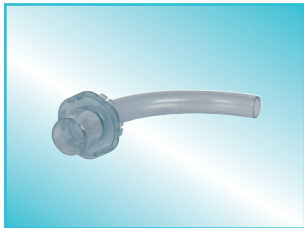
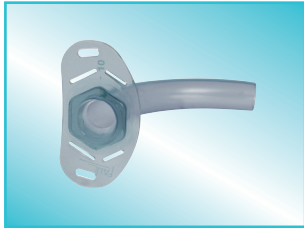


- ▶ Tracheostomy tube for long-term use, can be used up to 3-6 months
- ▶ With one inner cannula with 15 mm connector (ICU / UNI)
- ▶ Easy-Lock hexagonal lock is used for fixing the inner cannula and compatible accessories securely - no twisting, no fragile hooks
- ▶ Soft, pliable, lightweight
- ▶ Transparent, inconspicuous design
- ▶ Standard length from size 03 to 13, including pediatric sizes with half-mm size 3.5
- ▶ Custom-made variants possible (length, sieve-fenestration, bending)
- ▶ Including broad adjustable OPTIFLAUSCH® tube holder and a product ID card



## Order information:

**DURAVENT® UNI 1 ICU, SIZE 3-13**

When ordering, please state the size after the item number!



**REF 11011**

Size	O.D. neck flange mm	O.D. tip mm	I.D. mm O-cannula	I.D. mm I-cannula	Length mm
3	5.2	3.8	2.7	1.8	55
3.5	6.2	4.8	3.6	2.7	55
4	7.2	5.8	4.4	3.3	55
5	8.4	6.6	5.4	4.3	55
6	9.4	7.8	6.2	4.9	60
7	10.2	8.8	7.0	5.5	65
8	11.2	9.8	8.0	6.5	70
9	12.4	11.2	9.0	7.5	75
10	13.4	12.2	10.0	8.5	85
11	14.4	13.2	11.0	9.5	87
12	15.4	14.2	12.0	10.2	90
13	16.6	15.2	13.0	11.2	90

O.D. neck flange = Outer diameter behind the neck flange · O.D. Tip = Outer diameter of the outer cannula at the tip of the cannula · I.D. = Inner diameter at the tip of the cannula · O-cannula = Outer cannula  
I-cannula = Inner cannula · Length = Length over the outer curve



Keep away from sunlight



Single patient use



Consult instructions for use

**CAUTION:**  
United States Federal law restricts this device to sale, distribution and use by or on order of a physician or a licensed practitioner (in the US only).

Rx only

CE 0482

CE marking identification number of the notified body

Product made in Germany