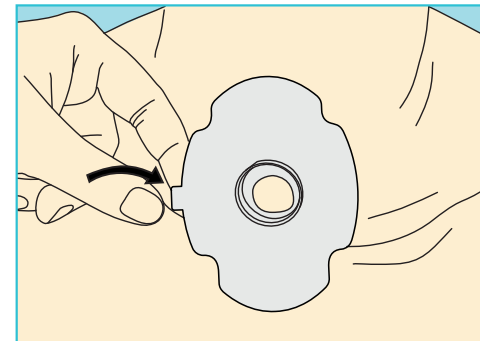
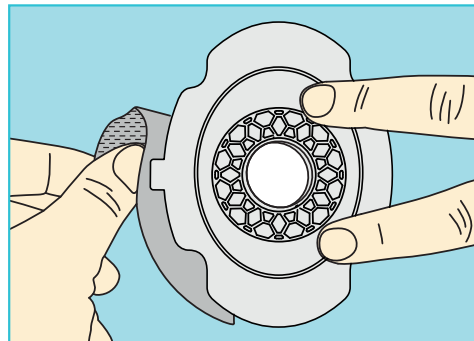
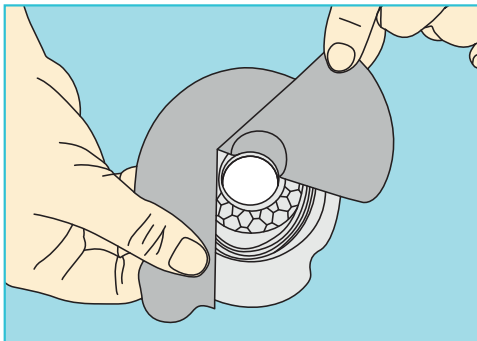
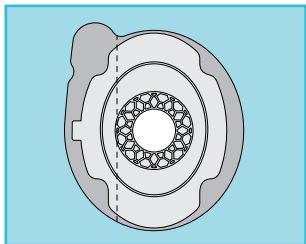


# LARYVOX® TAPE CONVEX

Base Plate

- ▶ Base plate, well suited for a deeply placed tracheostoma
- ▶ The base plate as honeycomb core offers a strong overall structure
- ▶ Due to its flexible honeycomb core, LARYVOX® Tape CONVEX offers a high level of wearing comfort as it is particularly strong, yet flexible and comfortable to wear at the same time
- ▶ The ergonomically shaped tear-off tab allows for easy placement
- ▶ The tape provides a reliable seal with its broad adhesive surface, which simplifies voice formation
- ▶ A new tab ensures easy removal of the tape from the skin
- ▶ Attachment system for daily use of HME filter cassettes or tracheostoma valves with a 22 mm adapter
- ▶ LARYVOX® Tape CONVEX is well suited for application with a finger-free speaking valve
- ▶ Transparent optics and water-repellent material
- ▶ Shape: oval / convex



## Order information:

LARYVOX® TAPE CONVEX, pack of 10

REF 48500