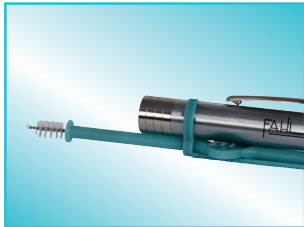
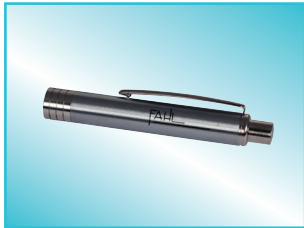


# LARYVOX® DUO BRUSH & LARYVOX® STOMA LIGHT

- ▶ For gentle and effective daily cleaning of voice prostheses
- ▶ With a brush to clean the channel of the voice prosthesis in the tracheoesophageal fistula and a sponge swab to remove deposits and residual secretions from the tracheal flange of the voice prosthesis
- ▶ With LARYVOX® Clip to allow the fixation of a stoma lamp (LARYVOX® Stoma Light, available separately). The combination of brush and lamp in one tool allows effective cleaning with one hand only and frees the other hand for other operations
- ▶ With integrated mirror on the backside of the box to release the patient from carrying extra equipment for daily care
- ▶ LARYVOX® Stoma Light, battery driven (battery include in scope of delivery), with bright LED-light to facilitate effective and safe cleaning of the voice prosthesis



## Order information:

**LARYVOX® Duo Brush**, Box with 6 pieces, Size 6 - 18

When ordering, please state the size after the item number!

**REF 29110**

**LARYVOX® Stoma light**

**REF 69101**

| Size<br>LARYVOX®<br>Duo Brush | Size<br>voice prostheses | REF      |
|-------------------------------|--------------------------|----------|
| 6                             | 4 - 6                    | 29110-06 |
| 8                             | 7 - 8                    | 29110-08 |
| 10                            | 9 - 10                   | 29110-10 |
| 12                            | 11 - 13                  | 29110-12 |
| 18                            | 14 - 18                  | 29110-18 |



Keep away from sunlight



Keep dry



Single patient use



Consult instructions for use



CE marking